

# MARGUERITA SUBDIVISION

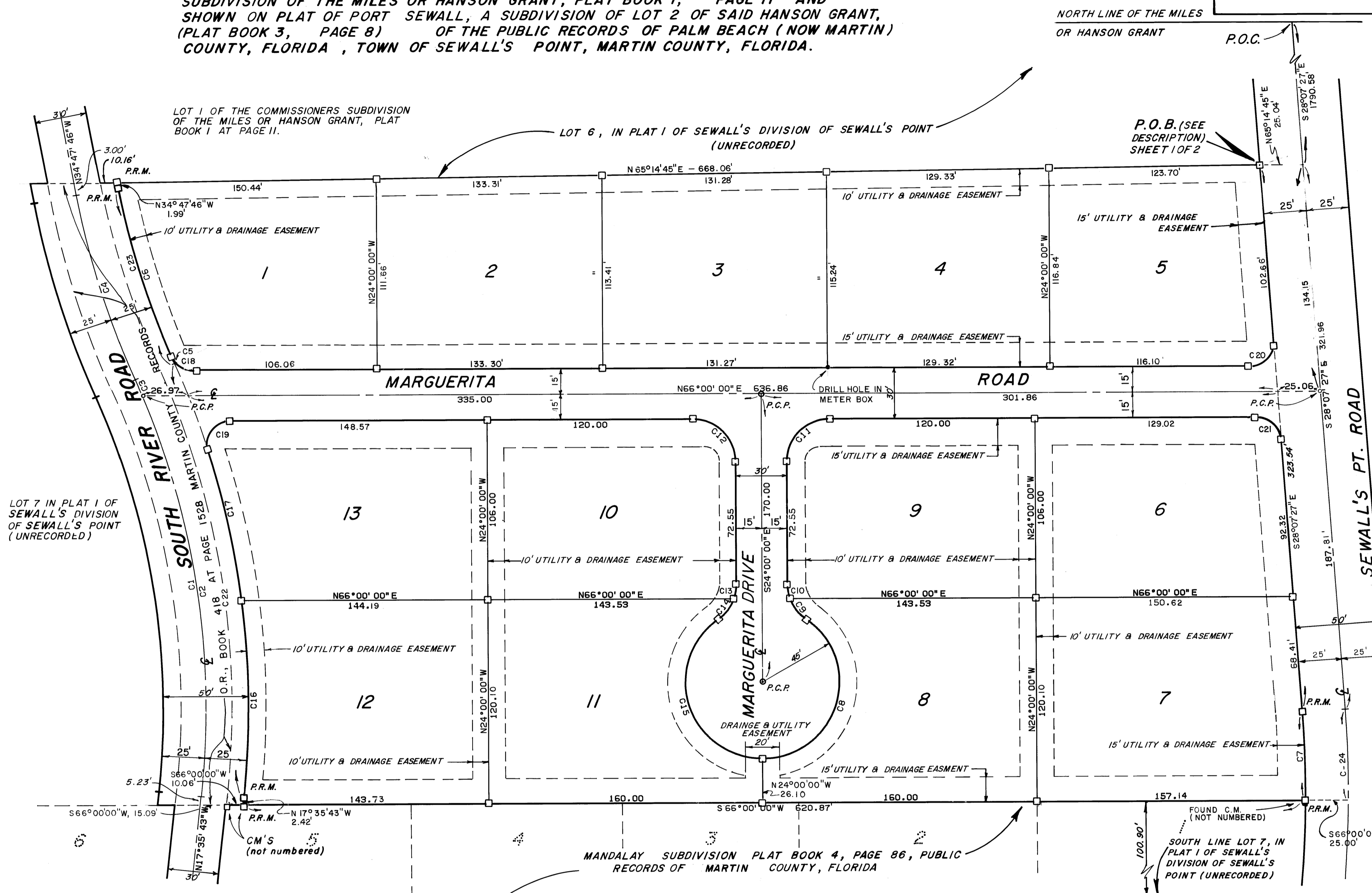
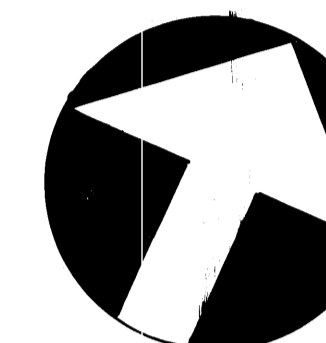
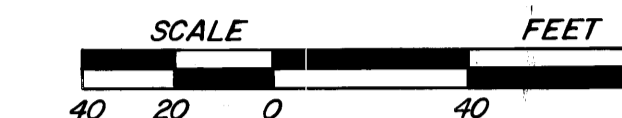
BEING A REPLAT OF A PORTION OF LOT 7, A DIVISION OF LOT 1 OF THE COMMISSIONERS SUBDIVISION OF THE MILES OR HANSON GRANT, PLAT BOOK 1, PAGE 11 AND SHOWN ON PLAT OF PORT SEWALL, A SUBDIVISION OF LOT 2 OF SAID HANSON GRANT, (PLAT BOOK 3, PAGE 8) OF THE PUBLIC RECORDS OF PALM BEACH (NOW MARTIN) COUNTY, FLORIDA, TOWN OF SEWALL'S POINT, MARTIN COUNTY, FLORIDA.

## CLERK'S RECORDING CERTIFICATE

I, LOUISE V. ISAACS, CLERK OF THE CIRCUIT COURT OF MARTIN COUNTY, FLORIDA HEREBY CERTIFY THAT THIS PLAT WAS FILED FOR RECORD IN PLAT BOOK 10, PAGE 3 MARTIN COUNTY, FLORIDA, PUBLIC RECORDS, THIS DAY OF MARCH 1985 LOUISE V. ISAACS, CLERK CIRCUIT COURT MARTIN COUNTY, FLORIDA BY DEPUTY CLERK (CIRCUIT COURT SEAL)

ALL BEARINGS SHOWN HEREON ARE RELATIVE TO THE NORTHLINE OF MANDALAY SUBDIVISION. (N 66°00'00"E)

SCALE - 1" = 40'  
MARCH 1985



LEGEND:  
□ SET 4" x 4" CONCRETE MONUMENT

CURVE TABLE

NO	BEARING	CHORD	DELTA	RADIUS	LENGTH	TAN	NO	BEARING	CHORD	DELTA	RADIUS	LENGTH	TAN
C1	N32°44'05"W	248.11	30°16'45"	475.00	251.02	128.52	C18	N80°37'58"W	16.50	66°24'04"	15.00	17.47	9.88
C2	N32°07'21"W	298.30	29°03'15"	475.00	240.87	123.08	C19	N12°21'48"E	24.16	107°16'24"	15.00	28.08	20.37
C3	N47°15'43"W	10.15	1°13'30"	475.00	10.16	5.08	C20	S18°56'16"W	21.96	94°07'27"	15.00	24.64	16.12
C4	N41°20'07"W	113.88	13°04'42"	500.00	114.13	57.31	C21	S71°03'44"E	20.44	85°52'33"	15.00	22.48	13.96
C5	N47°34'12"W	5.05	0°36'32"	475.00	5.05	2.52	C22	S32°44'05"E	261.17	30°16'45"	500.00	264.24	135.28
C6	N41°01'51"W	103.17	12°28'10"	475.00	103.37	51.88	C23	S41°20'07"E	108.19	13°04'42"	475.00	108.42	54.48
C7	S25°46'35"E	51.90	4°42'23"	631.95	51.91	25.97	C24	S29°47'11"E	53.60	04°41'37"	656.95	53.62	26.92
C8	N06°34'30"W	85.87	145°09'00"	45.00	114.00	143.38							
C9	N61°26'50"W	15.20	35°24'20"	25.00	15.45	7.98							
C10	N31°52'20"W	8.57	15°44'40"	25.00	8.62	4.35							
C11	N21°00'00"E	35.36	90°00'00"	25.00	39.27	25.00							
C12	S69°00'00"E	35.36	90°00'00"	25.00	39.27	25.00							
C13	S14°07'40"E	8.57	19°44'40"	25.00	8.62	4.35							
C14	S13°26'50"W	15.20	35°24'20"	25.00	15.45	7.98							
C15	S41°25'30"E	85.87	145°09'00"	45.00	114.00	143.38							
C16	N24°21'16"W	117.70	13°31'06"	500.00	117.97	59.25							
C17	S36°11'37"E	88.54	10°09'35"	500.00	88.66	44.45							

MATHERS & ASSOCIATES  
ENGINEERS - SURVEYORS  
DESIGNERS - LAND PLANNERS - CONSULTANTS  
295 FLORIDA STREET - STUART, FLORIDA  
(305) 287-0525

SHEET NO.  
2  
OF  
2